



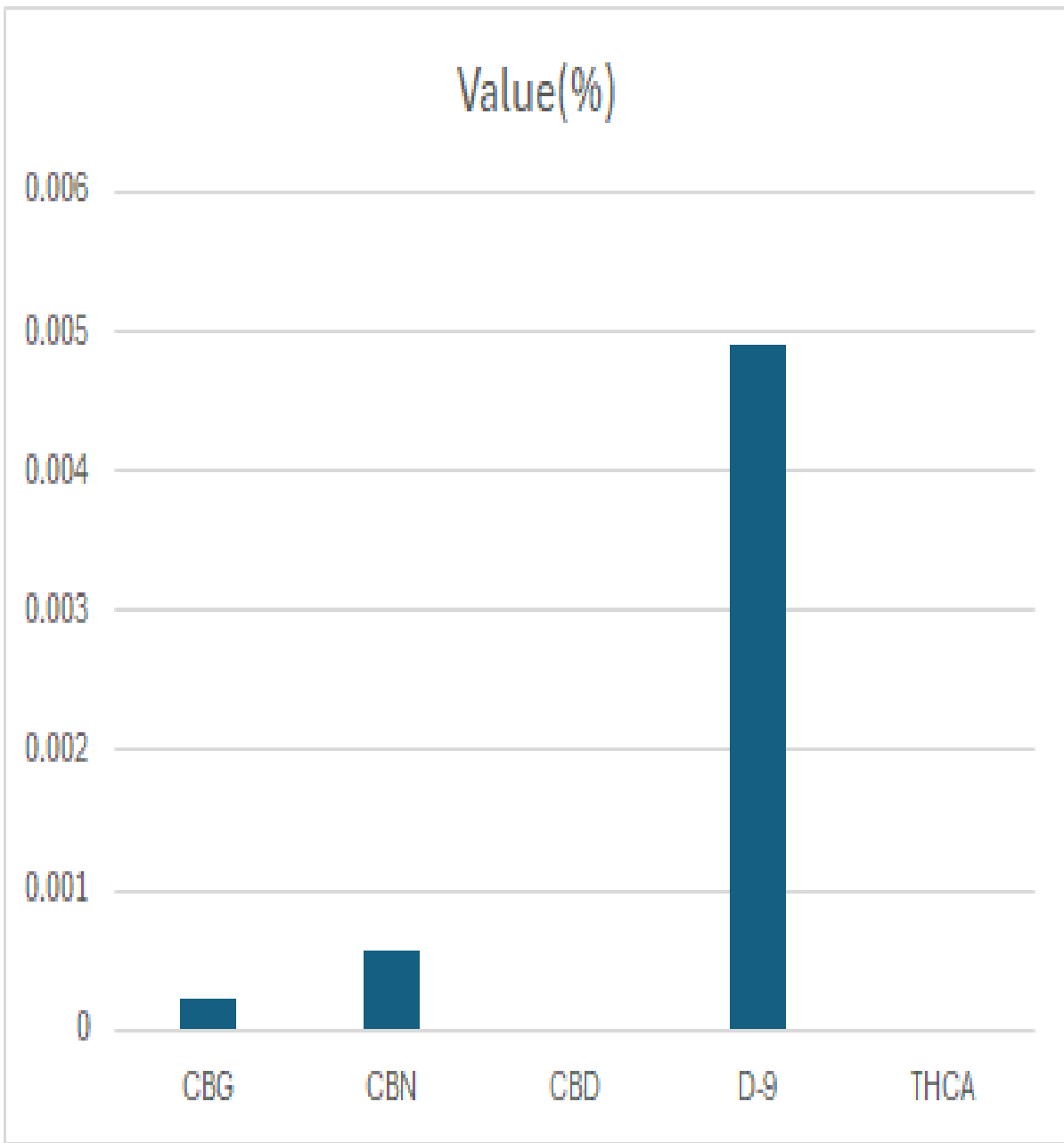
# GREENWAY LABS

## CERTIFICATE OF ANALYSIS

Client: Dank Distribution, LLC  
PROJECT 25019125  
EDIBLE  
ROSIN CHOCOLATE BAR - HYBRID (RUNTZ)

LAB-ID 64539125  
REPORT DATE 6/23/2025

### CANNABINOID PROFILE



CANNABINOID	WEIGHT(%)
CBC	ND
CBD	ND
CBDA	ND
CBDV	ND
CBG	0.00023
CBN	0.00056
D9-THC	0.00491
THCA	ND
Total-CBD	ND
Total-THC	0.00491
Total Cannabinoids	0.00570

Prepared By: GWL Lab Staff  
Analyzed By: GWL Lab Staff  
Prep Date: 6/23/2025  
Analysis Date: 6/23/2025

Nick Benson  
LAB DIRECTOR

6/23/2025

This is a Greenway Labs Certificate of Analysis and may not be reproduced without written approval from Greenway Labs. Greenway Labs maintains strict confidentiality of all client data. Any information regarding an analysis is shared only with the the individuals designated on the Laboratory Chain of Custody (COC) as contacts unless authorization is received. Limits of Quantification (LOQ) are available upon request. This report complies to the requirements of the ISO/IEC 17025:2017 standard. Review the results, expanded uncertainty and specifications to ensure they meet your requirements. Uncertainty values are available upon request.